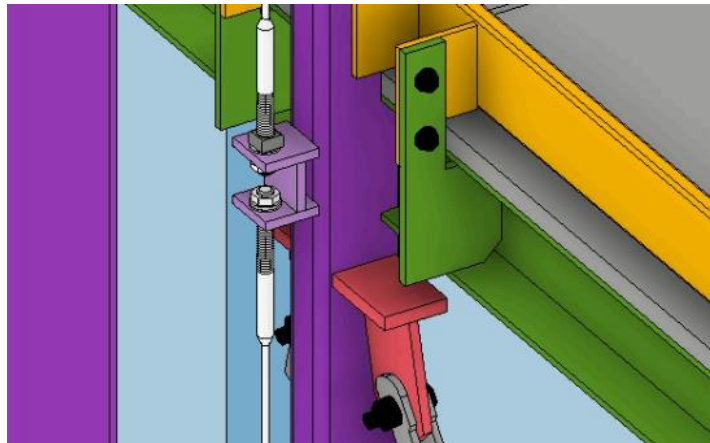
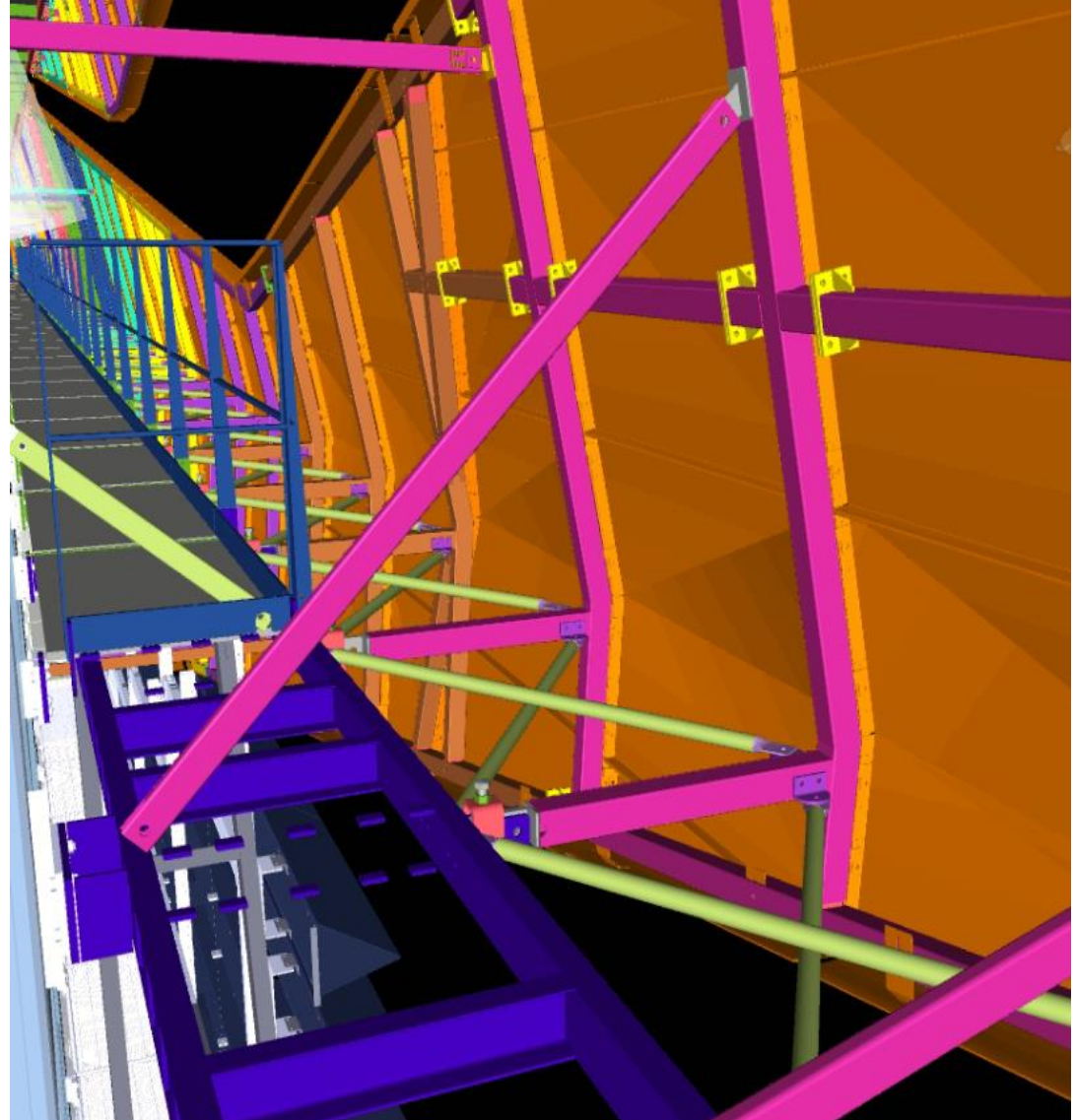
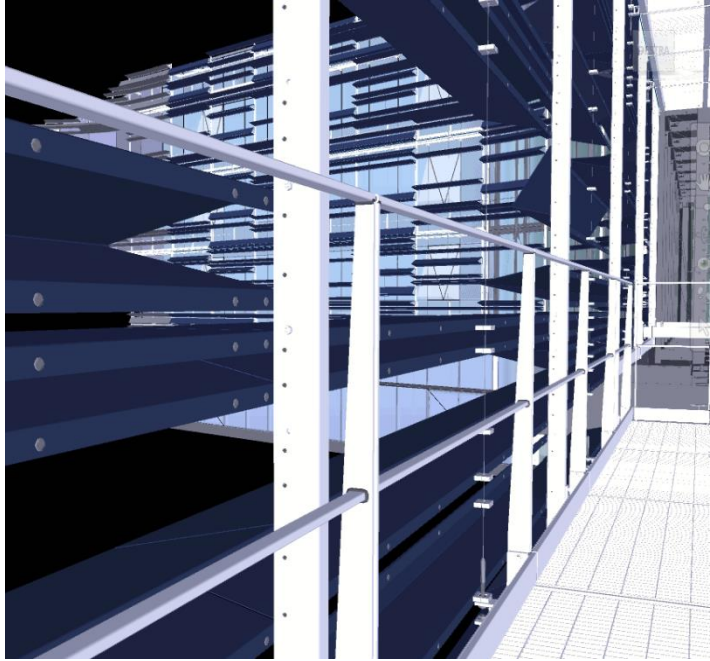






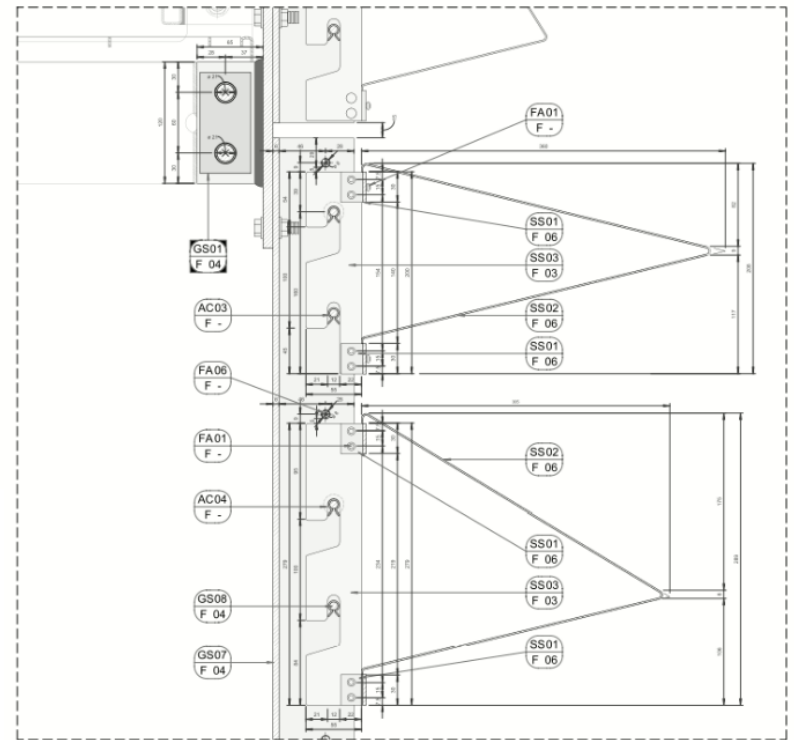
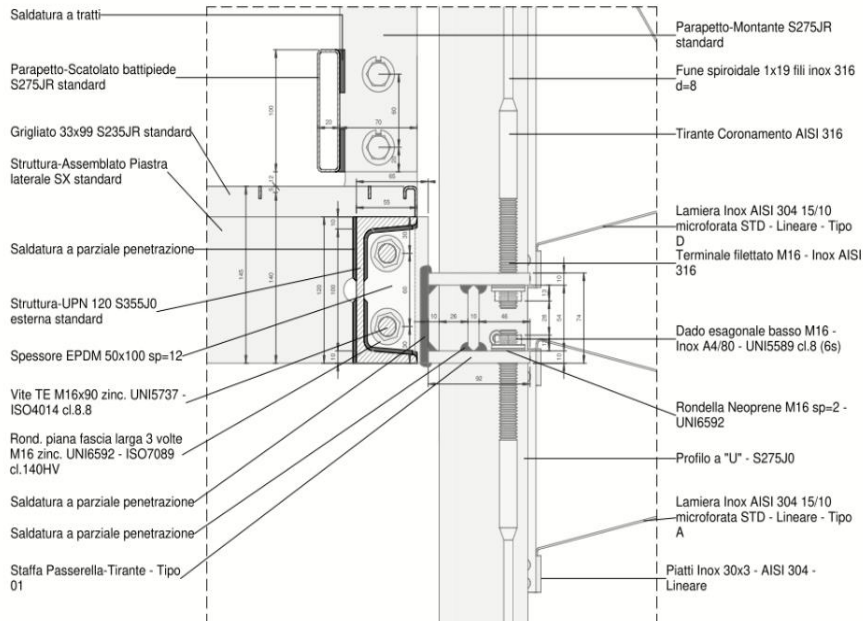
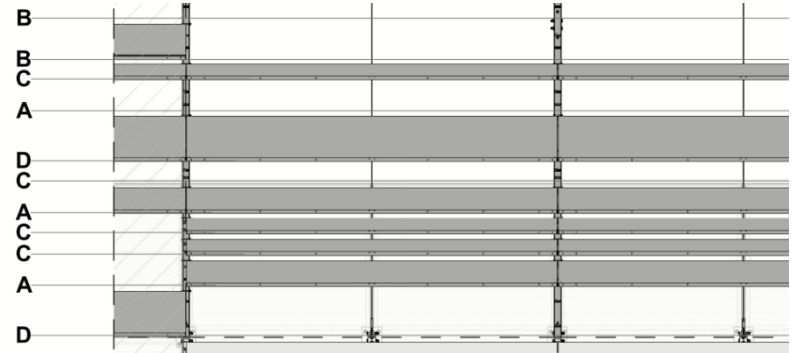
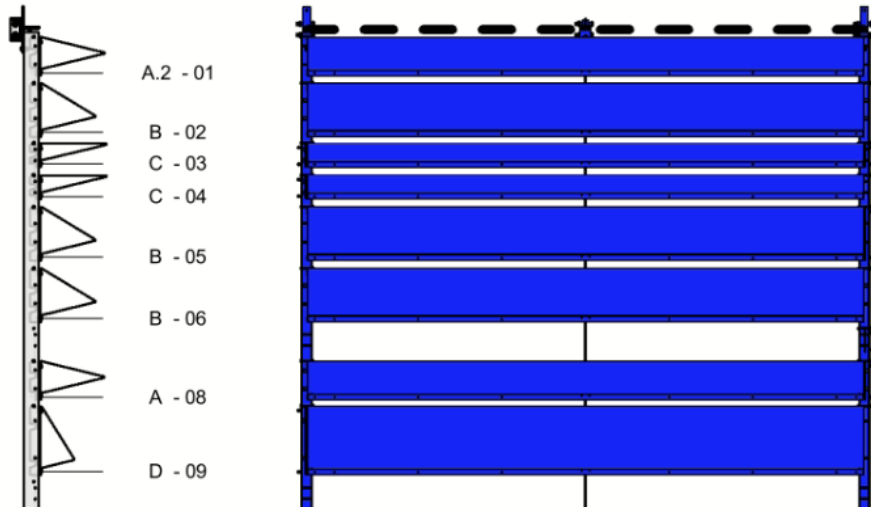
# BIM COORDINATION

# FIRST AND SECOND SKIN – FACADE



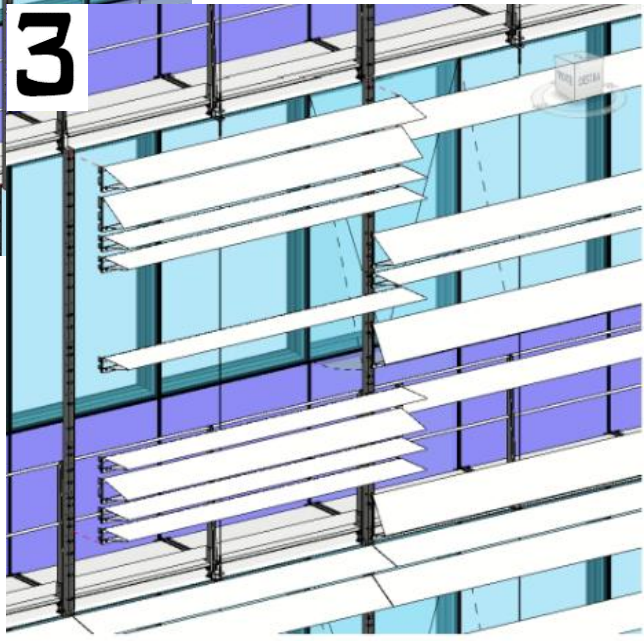
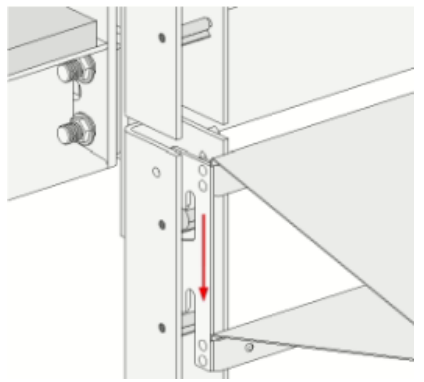
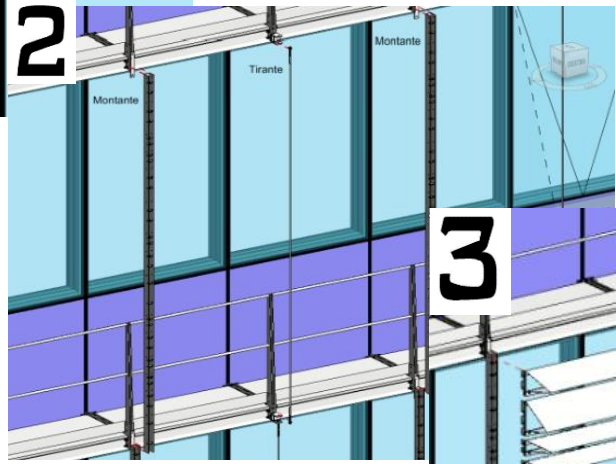
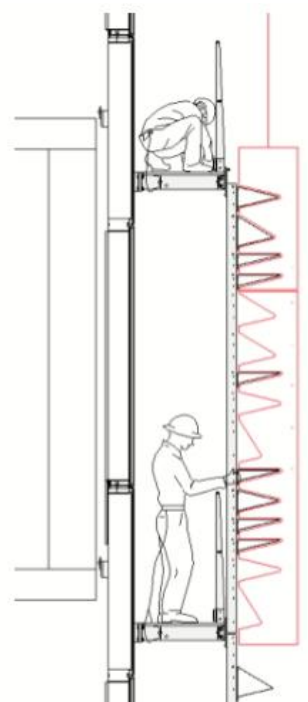
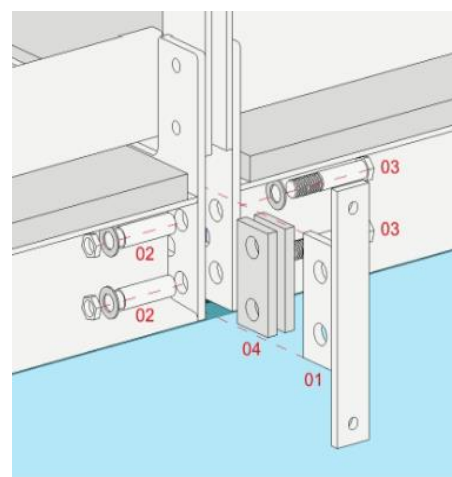
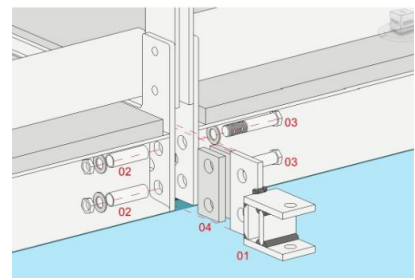
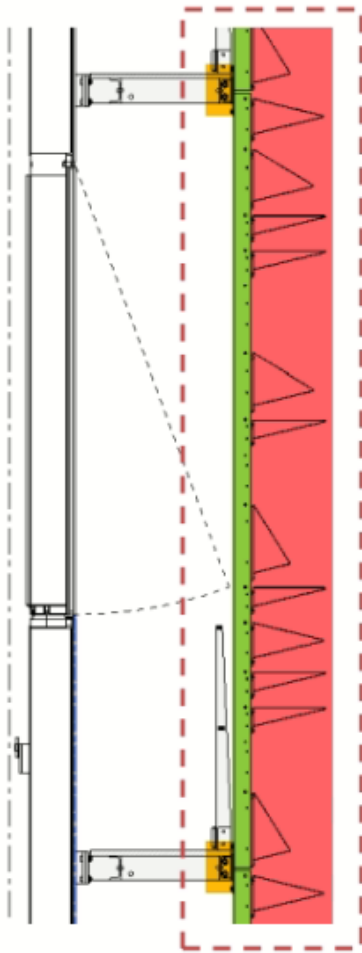
# WORKSHOP DRAWINGS BIM BASED

# FIRST AND SECOND SKIN – FACADE



01 - DETTAGLIO DI SEZIONE SU MONTANTE - DOGA LINEARE  
 scala 1:2

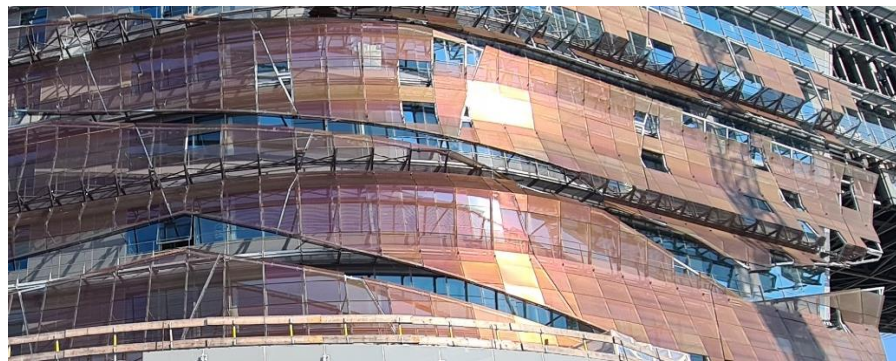
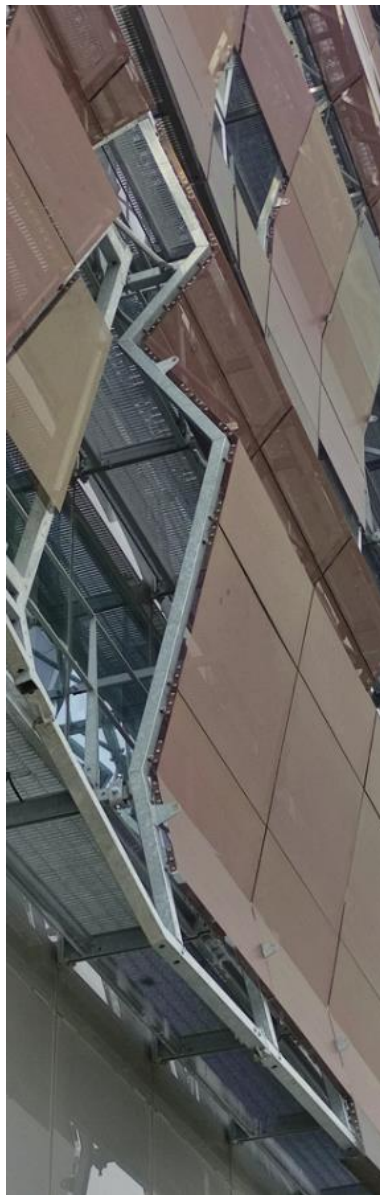
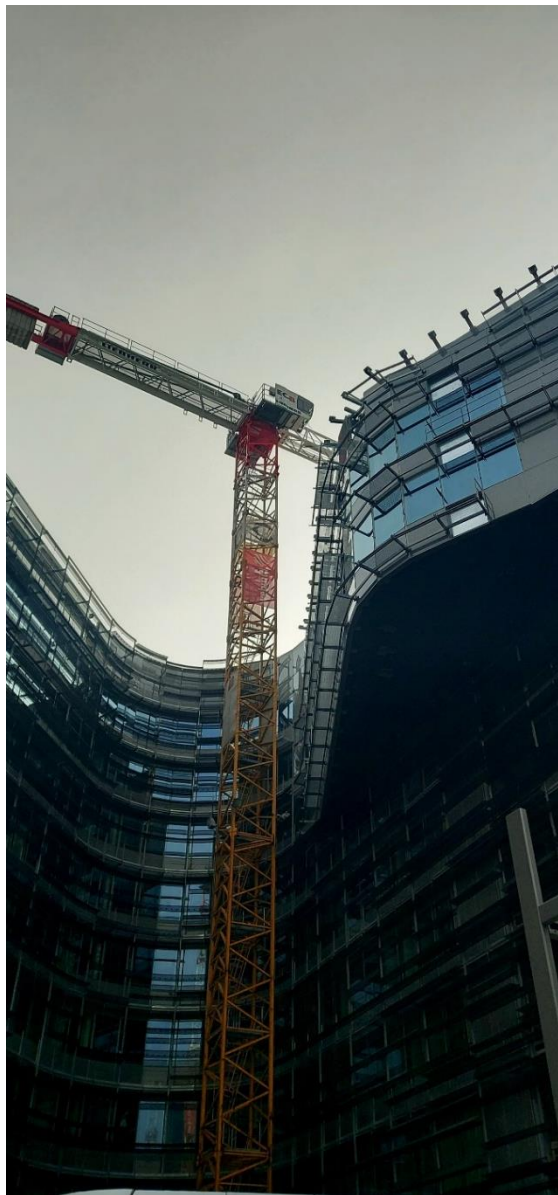




- FASE 1: Posa staffe montante e tirante
- FASE 2: Posa montante e tirante
- FASE 3: Posa doghe
- FASE 4: Completamento posa modulo

## CONSTRUCTION SITE

## FIRST AND SECOND SKIN – FACADE



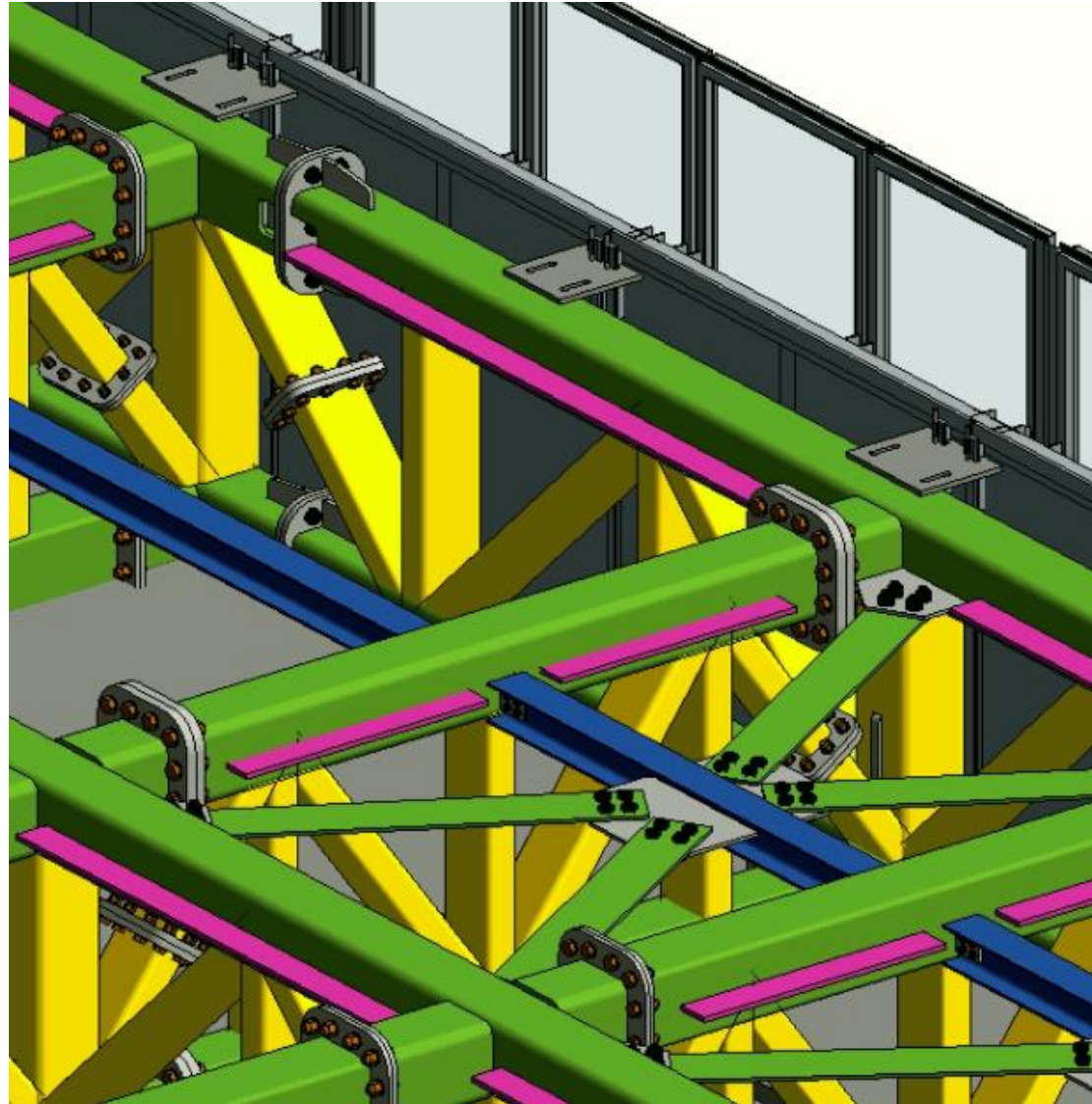
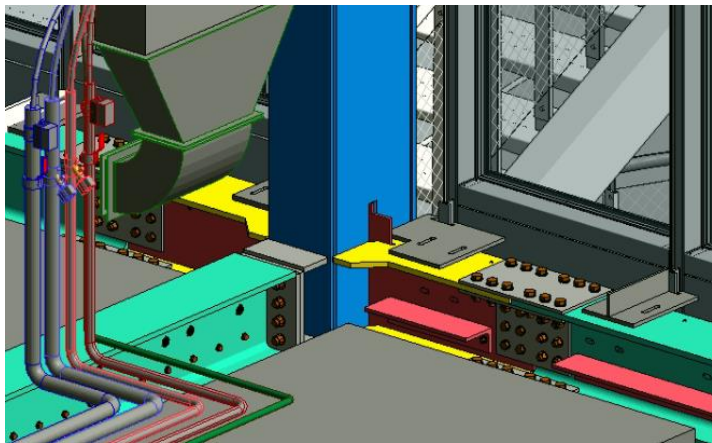
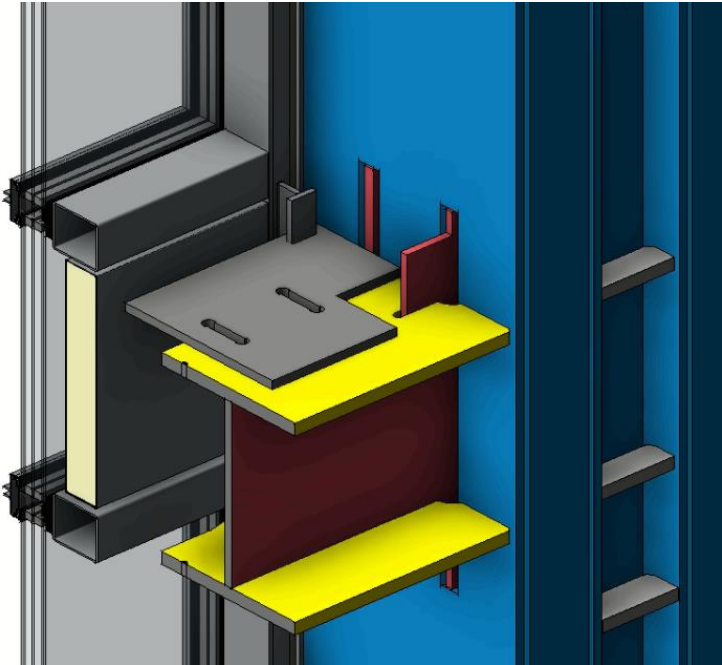


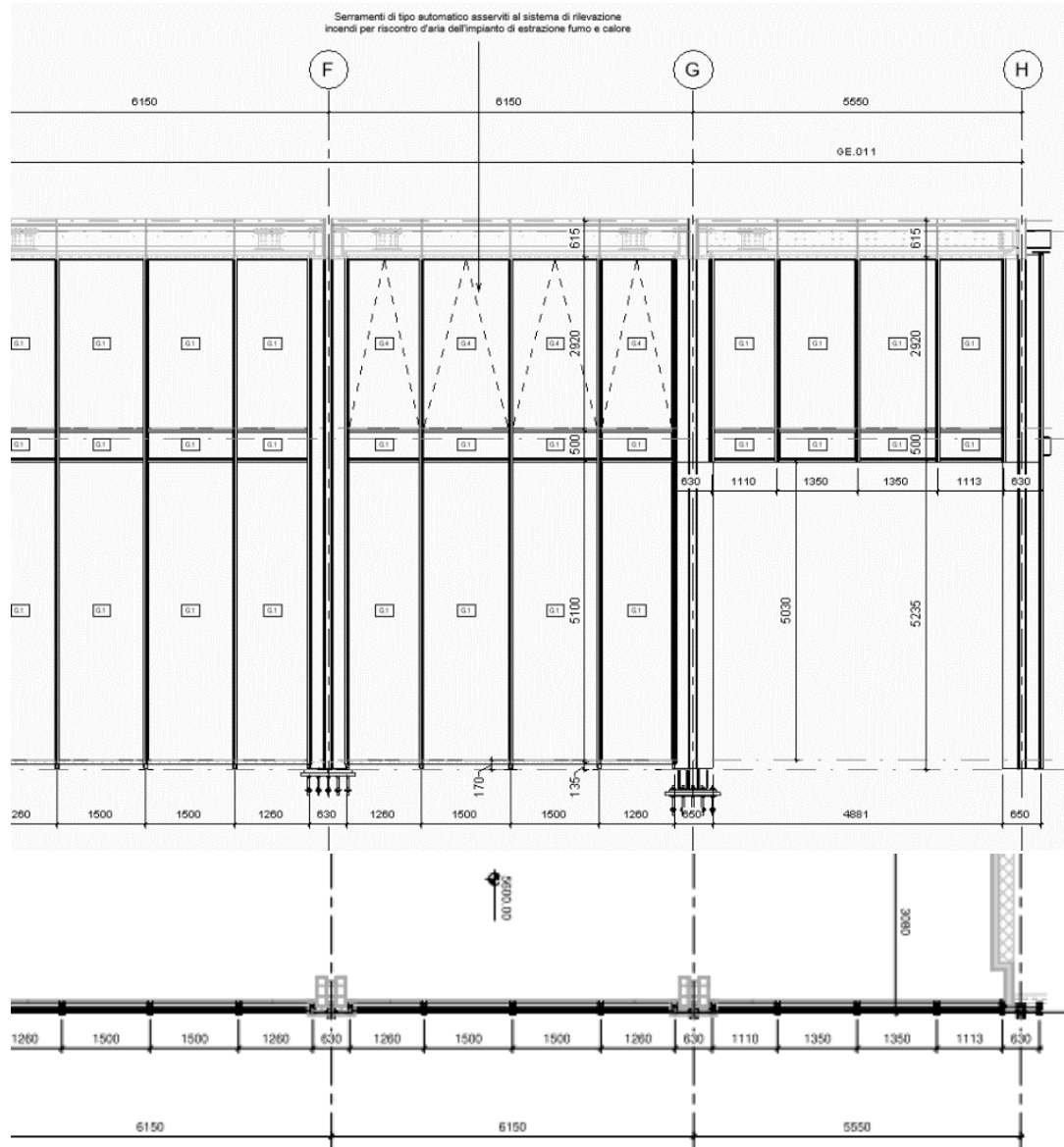
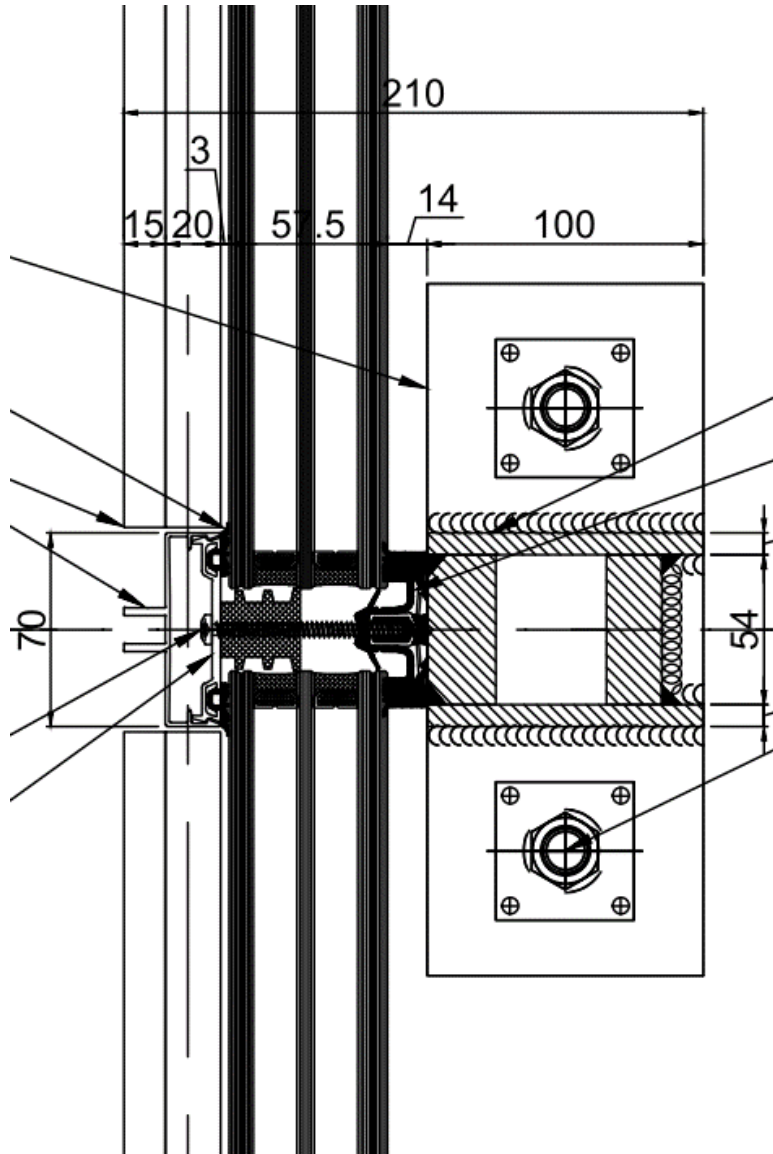




# BIM COORDINATION

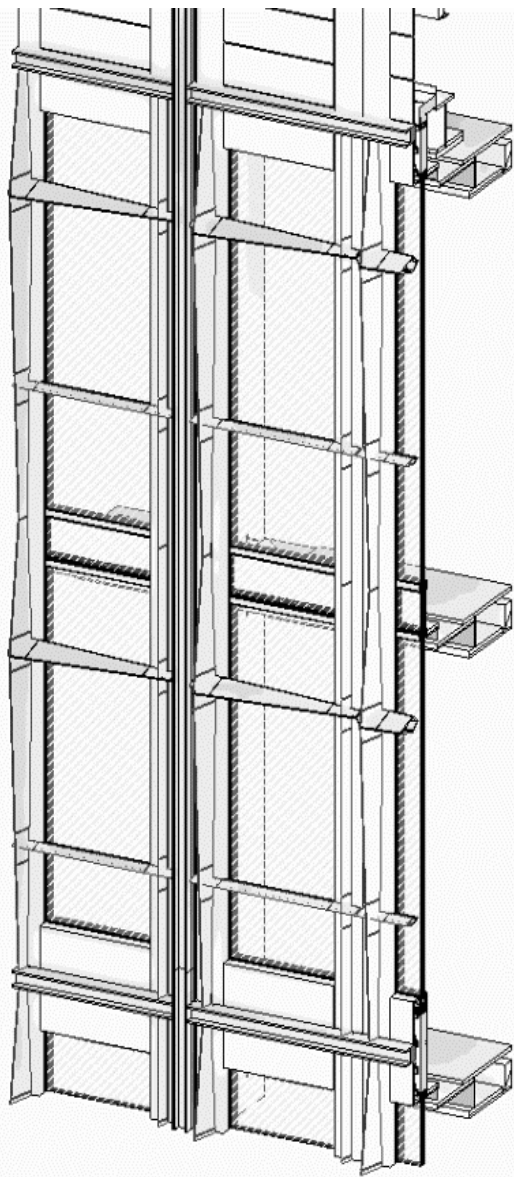
# FIRST AND SECOND SKIN – FACADE





# CONSTRUCTION SITE

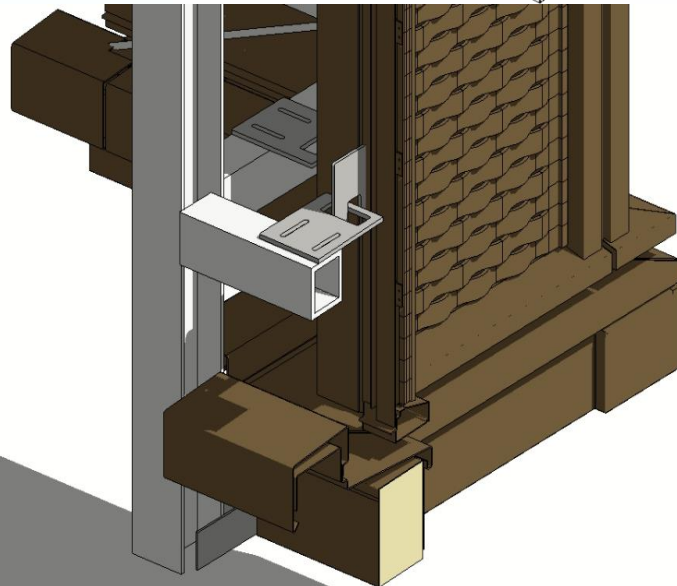
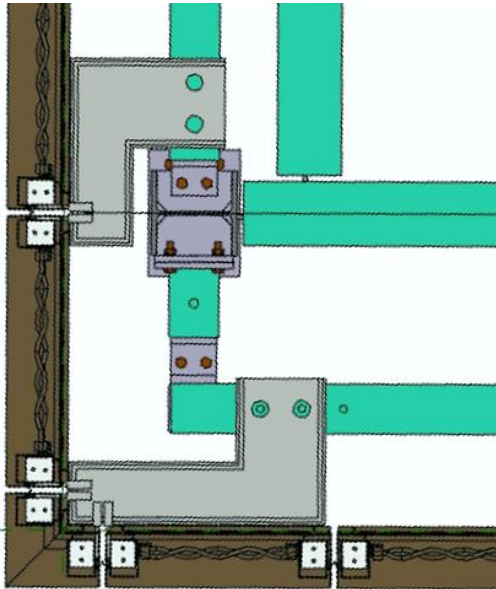
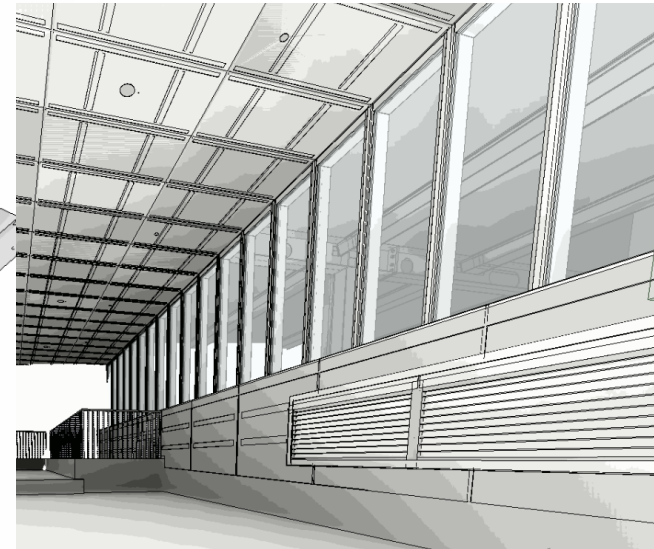
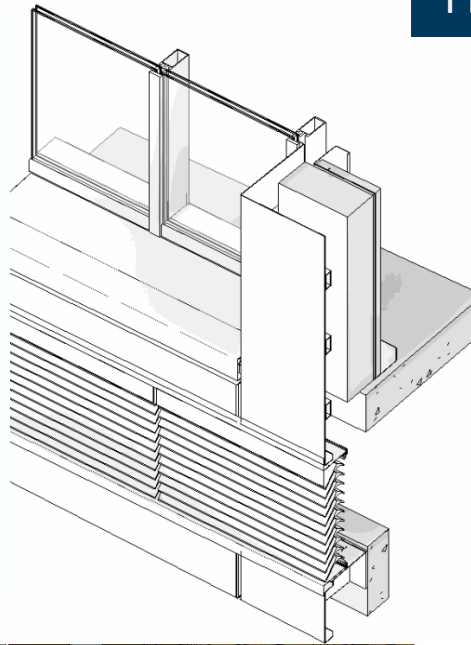
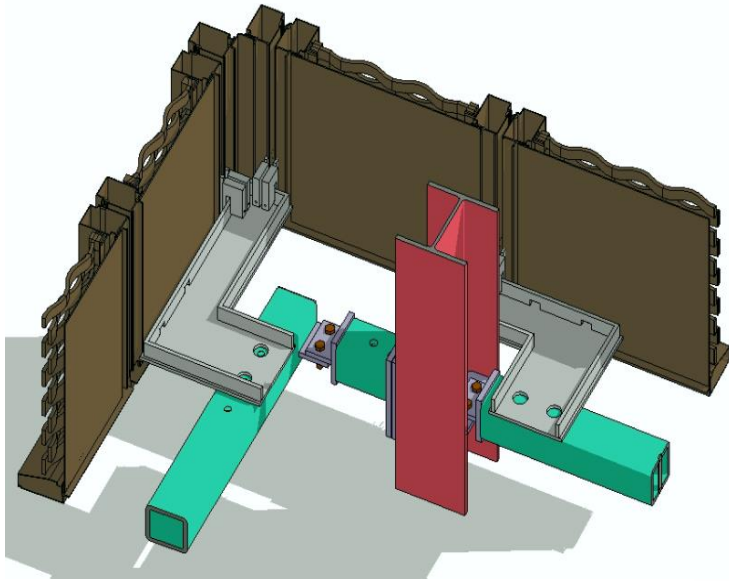
# FIRST AND SECOND SKIN – FACADE





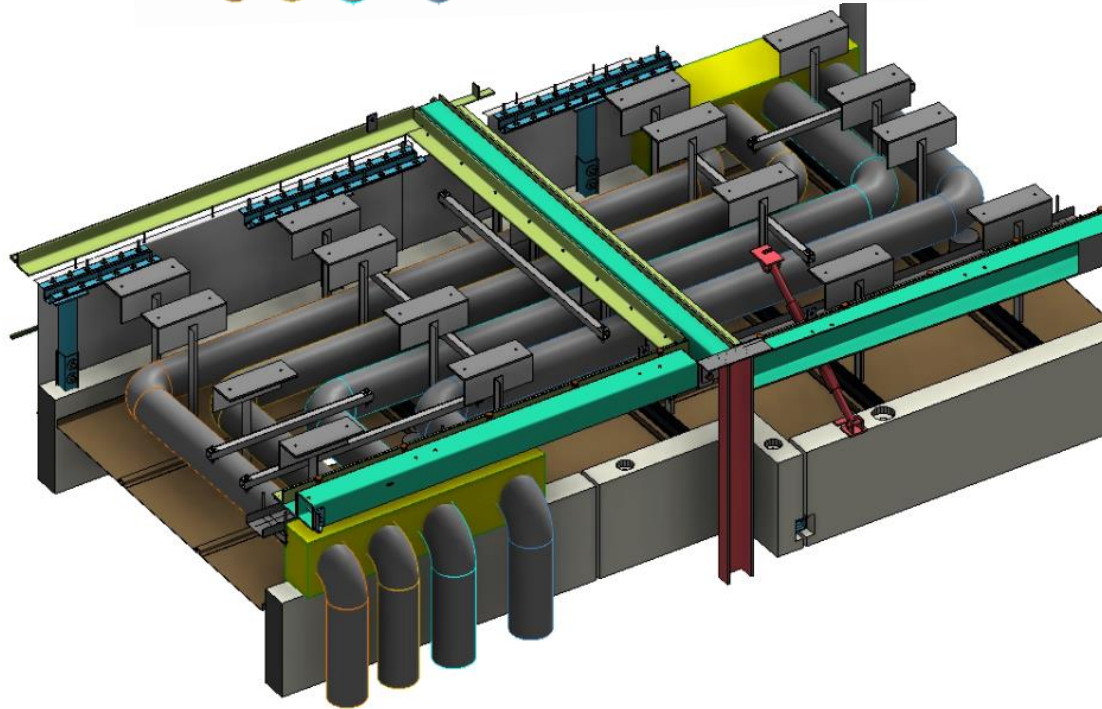
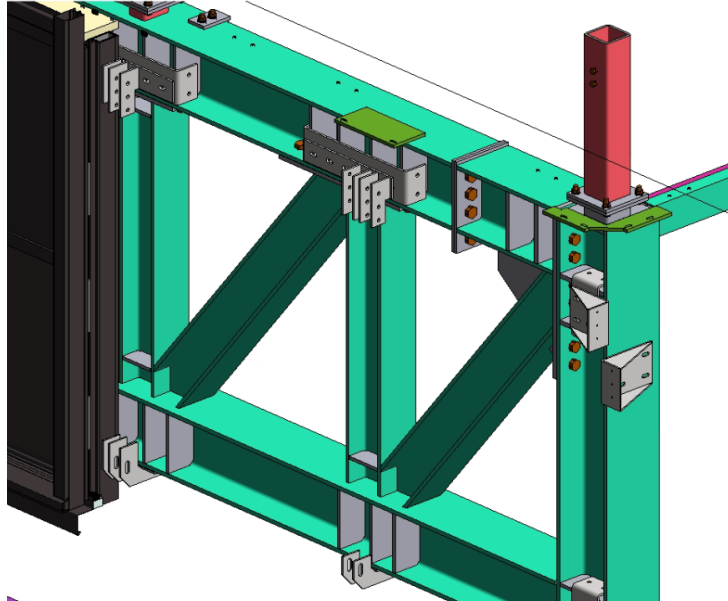
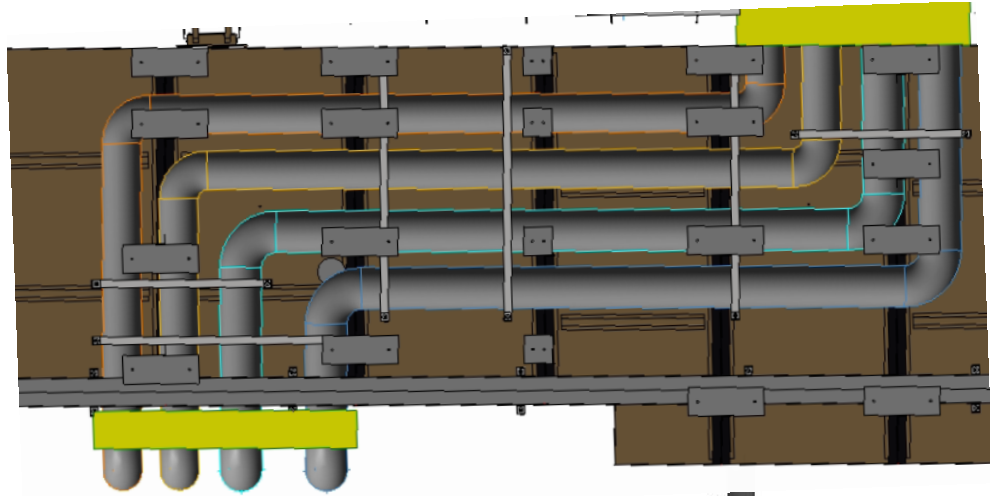
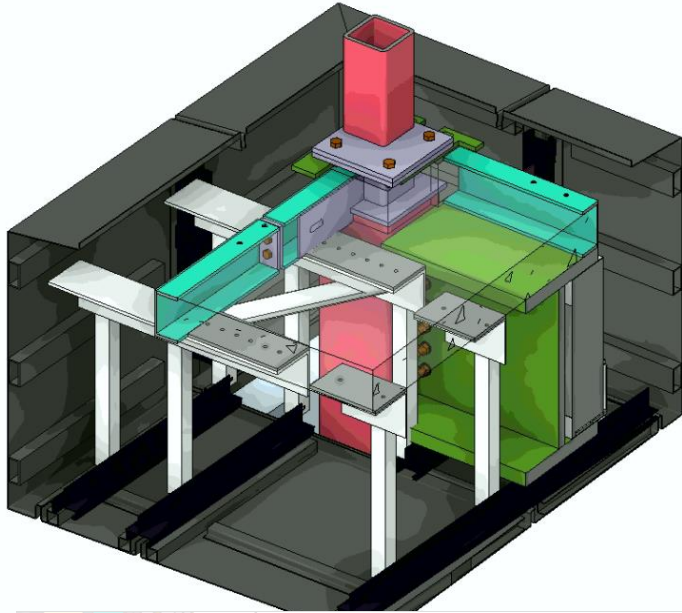
# DESIGN AUTHORIZING

# FIRST AND SECOND SKIN – FACADE



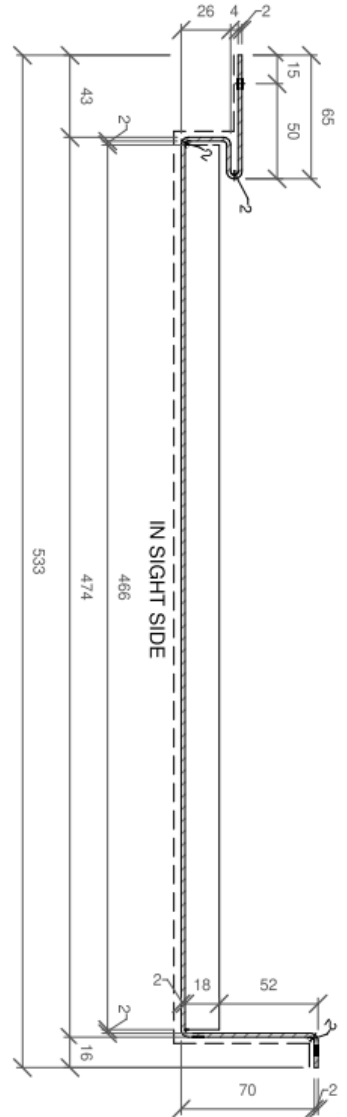
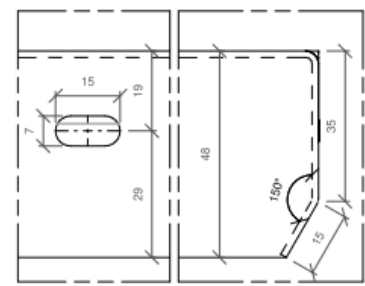
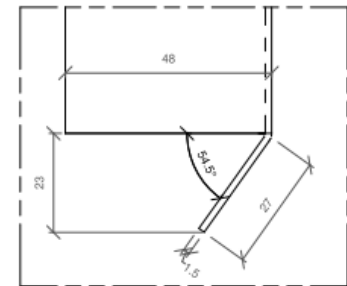
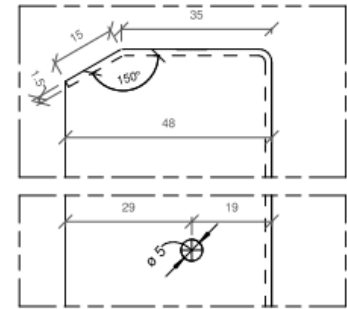
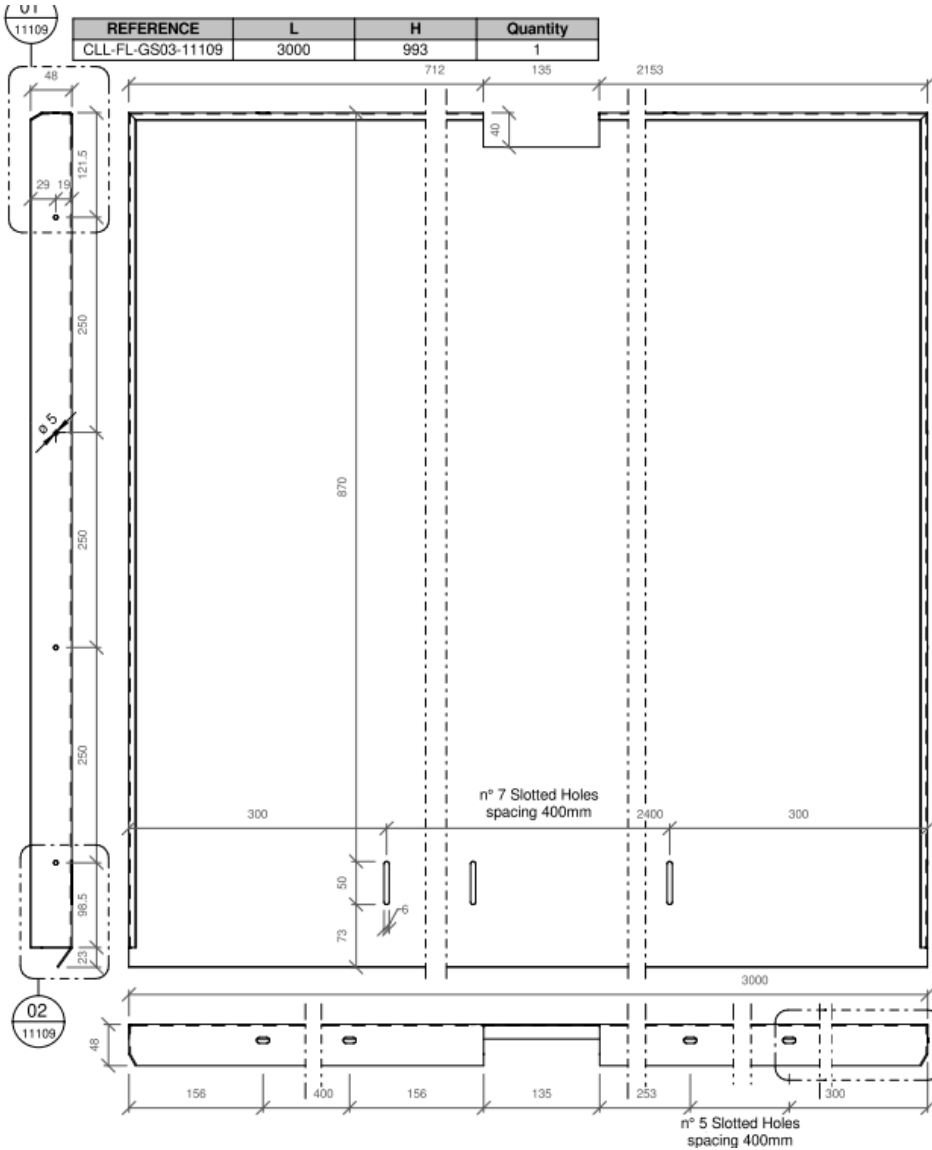
# BIM COORDINATION

# FIRST AND SECOND SKIN – FACADE



# FABRICATION DRAWINGS BIM BASED

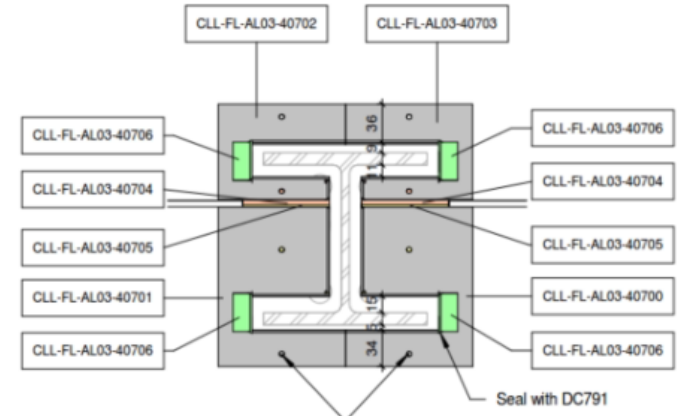
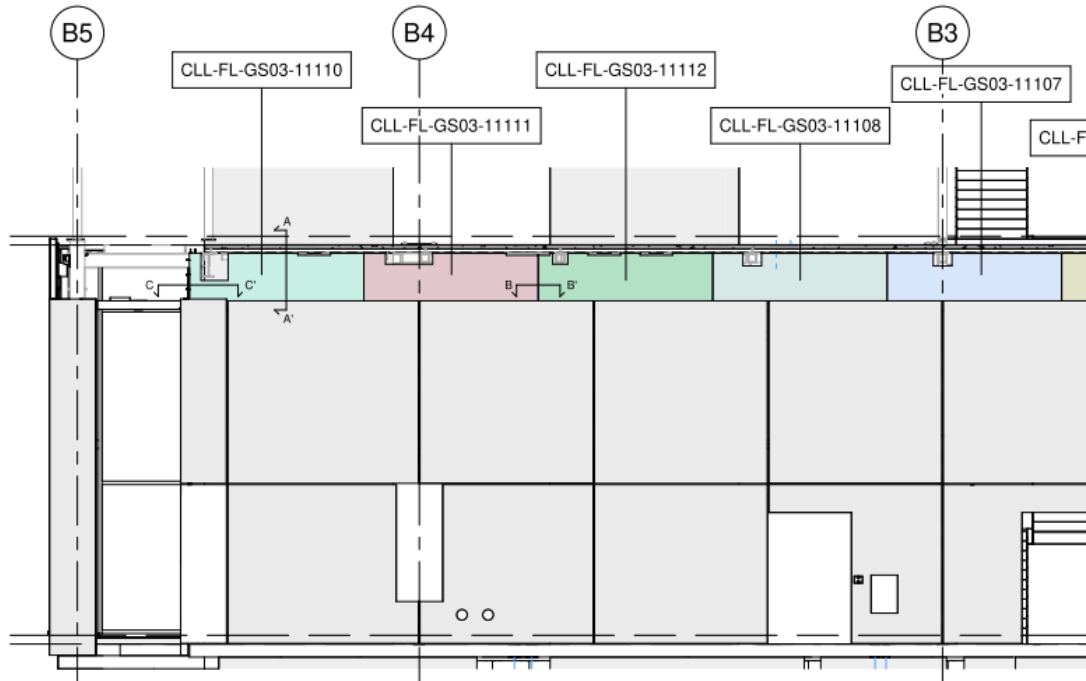
## FIRST AND SECOND SKIN – FACADE



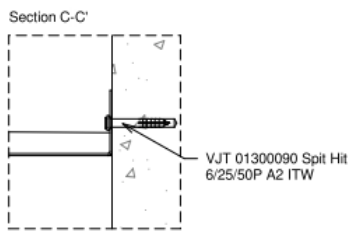
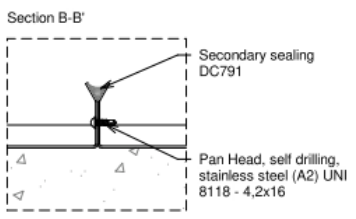
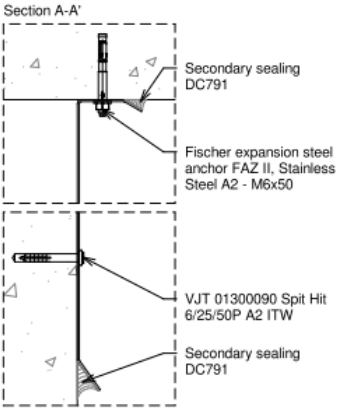


# INSTALLATION DRAWINGS BIM BASED

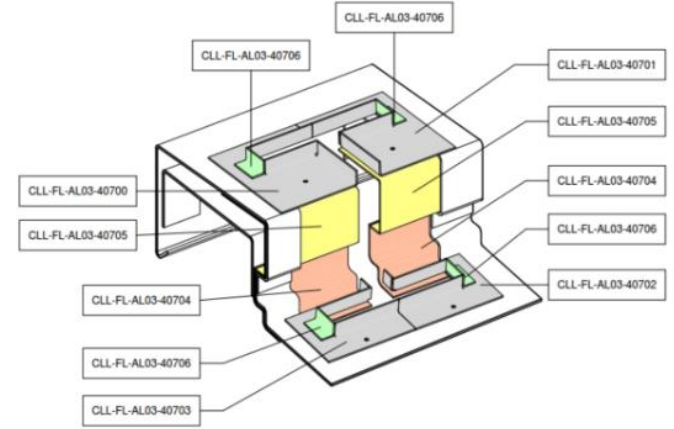
# FIRST AND SECOND SKIN – FACADE



For fixing the plates to the flashings use:  
RSH-AS-LAC lacquered sealed head rivets 4,5x11 SS A4

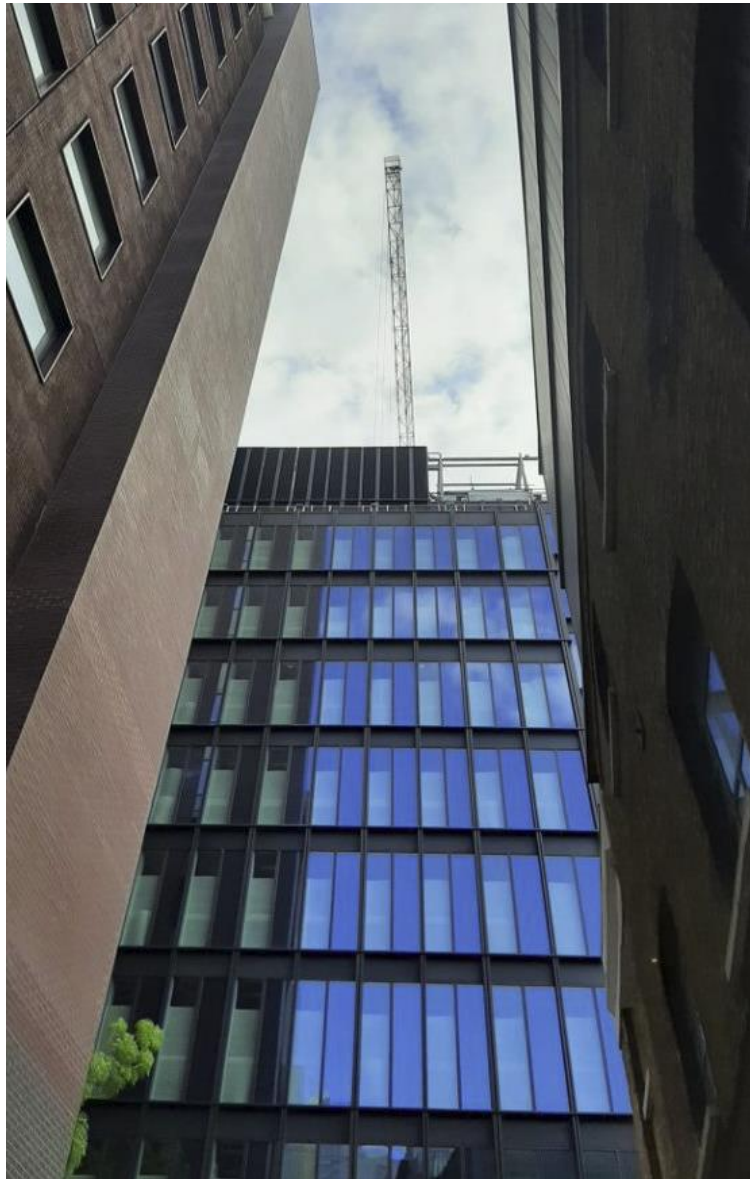


## SITE\_West-Precast Back

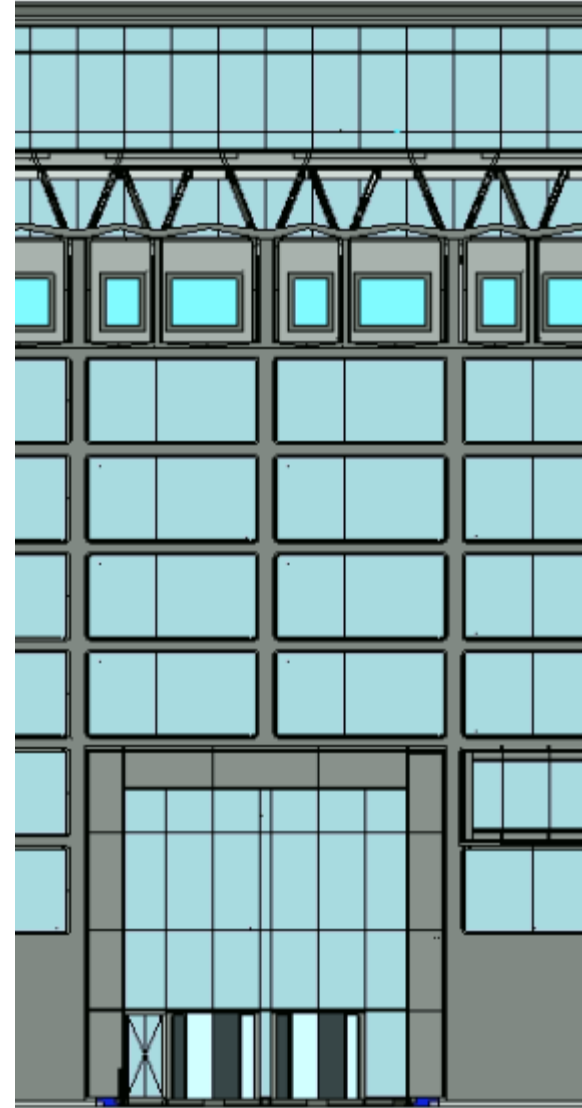
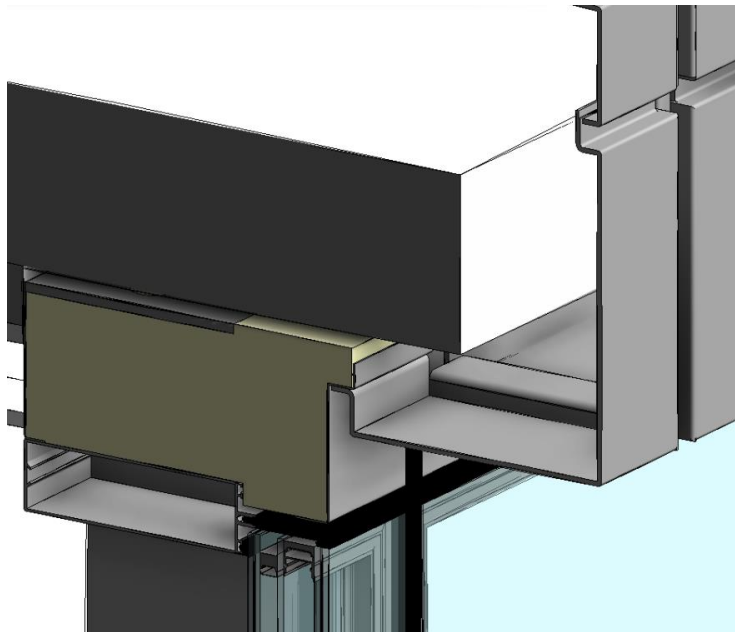
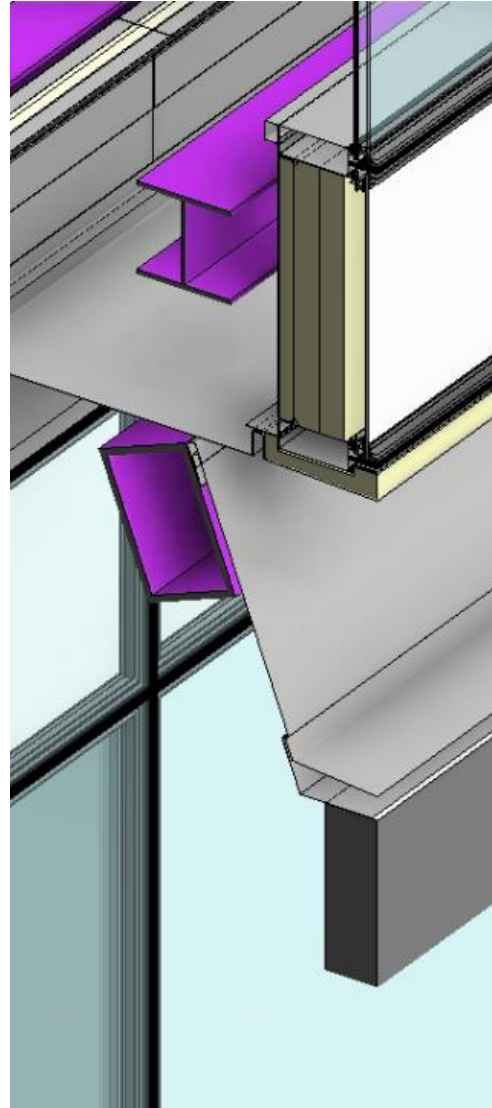
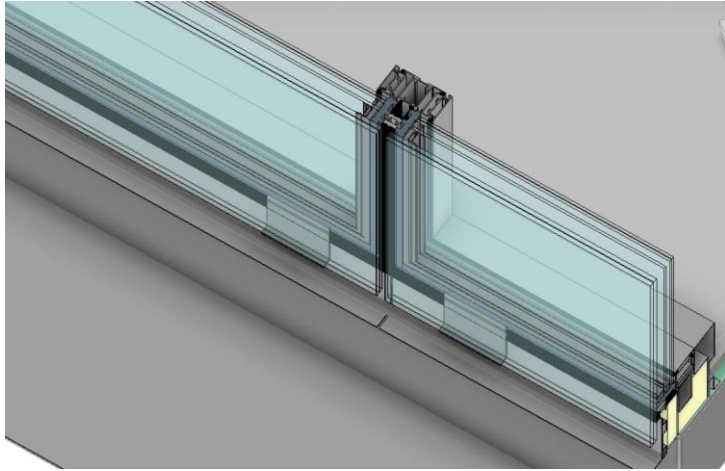


## CONSTRUCTION SITE

## FIRST AND SECOND SKIN – FACADE



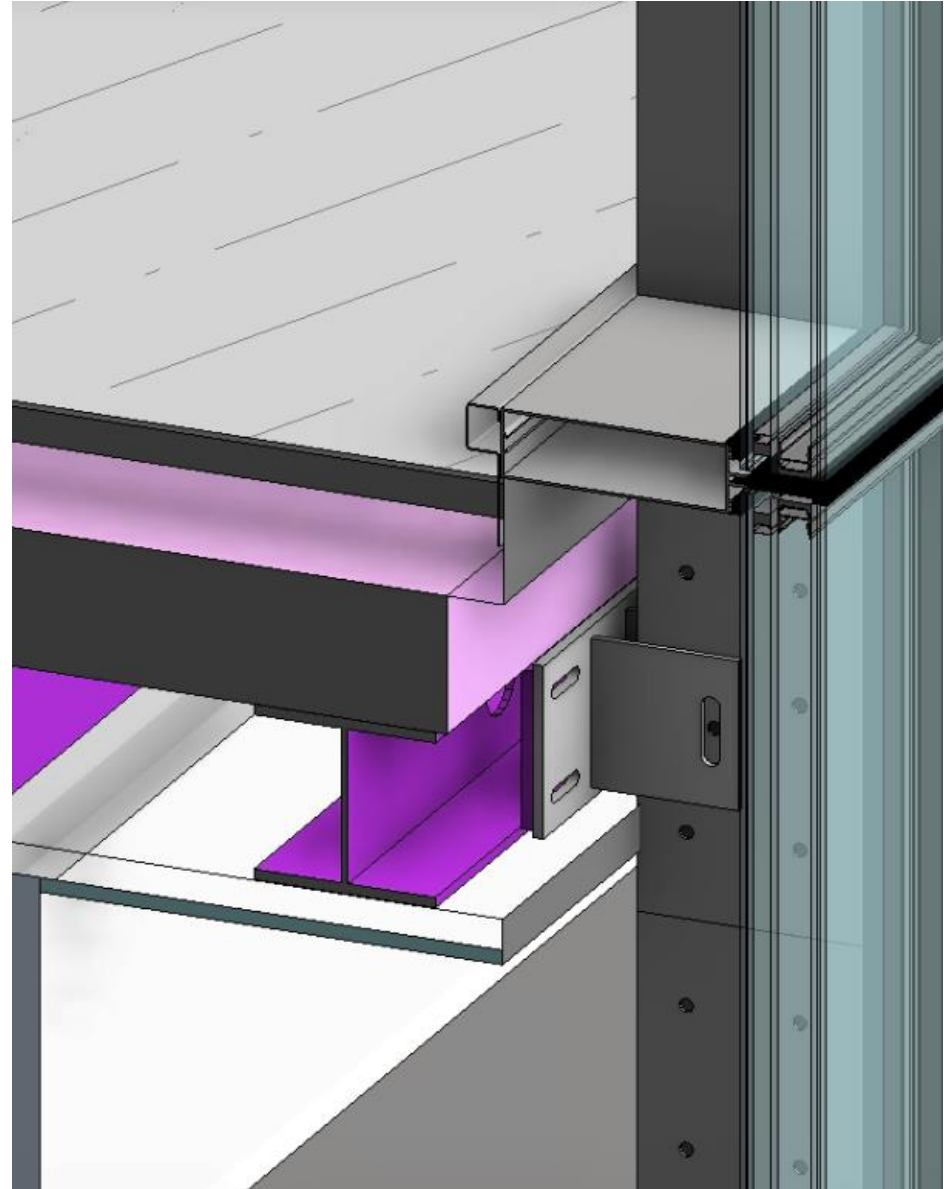




## BIM COORDINATION



## FIRST AND SECOND SKIN – FACADE



# WORKSHOP DRAWINGS BIM BASED

# FIRST AND SECOND SKIN – FACADE

